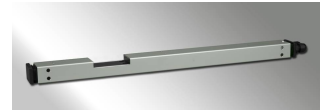


Supplementary Electric Locking ZVE-UNI

This supplementary electric locking increases the clamping force of high and wide windows and provides mechanical locking.

This locking unit is universal applicable together with an electro mechanical actuator of our product range at inwards or outwards opening, left or right wings for both smoke control and environmental ventilation.

The ZVE-UNI is protected by a registered design.



Technical Data:

Supplementary Electric Locking Type ZVE-UNI Item number:	
Nominal voltage (min./max.):	24 VDC (+ 20 % / - 10 %)
Nominal current:	85 mA
Cut off current at blockade:	120 mA
Clamping force:	200 N
Locking force:	750 N
Max opening / closing time:	Ca. 30 Sekunden
Cut off electronic:	Overload protection: Electronic Max current of each following actuator: 5 A, ripple < 10 % Delay time of sequence controlling: Approx. 2 seconds. Note: during this time no actuator can be triggered
Dimensions:	Aluminium EV1, anodized 465 x 25 x 49 mm
Ingress protection:	IP 40
Switch on duration:	ED 30 %
Temperature range:	- 5° C up to + 75° C
Weight:	Approx. 1.0 kg

Article

Supplementary electric locking type ZVE-UNI for inwards or outward opening, left or right wings, on plastic or wooden windows, including mounting accessories.		
	Typ	Item number
	ZVE-UNI	B5 6101
	Eigenschaften: Locking housing, basic plate and locking angles are made of aluminium EV1 anodized. End caps, cable inlet and locking area are made of plastic, black,	

	<p>with integrated sequence controller.</p> <p>ATTENTION!</p> <ul style="list-style-type: none"> - Only to use together with actuators of SIMON RWA Systeme GmbH with feedback signal! - Max load capacity 3.0 A = max total current consumption of actuators! - Consider capacity of storage batteries in the control panels 	
--	---	--

Actuator and Bracket coating

Note: Small parts as screws, nuts and sliding parts will not be coated!

Accessories	Item number
<p>Coating in all RAL and DB colours</p> <p>Prices on request</p>	