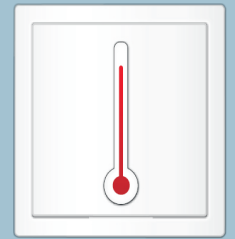
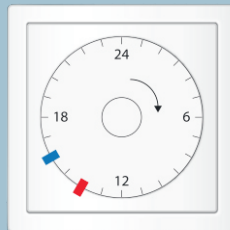
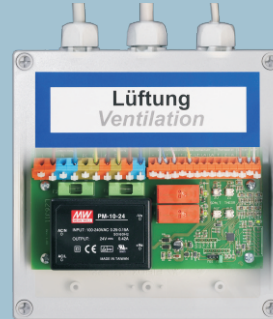


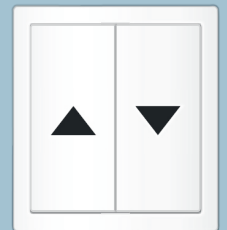
Wind-Rain-Detector



Thermostat



Central Timer



Vent Switch

# Control Technology 230 V

Control Panel Vent 61

# Vent control panel 230 V

## Compact version type VENT 61

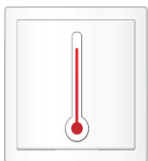


Natural ventilation supplies optimum indoor climate



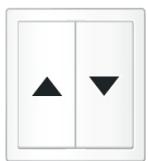
Controlled open and close of motorized windows to regulate indoor climate and ambient air is an important part of modern building management systems and to save energy. By using the state of the art VENT 61 control panel the user can adjust the rate of automation by himself. Timer, thermostat and wind/rain detector provide a constant indoor air quality at all weather conditions. However, it is possible to override the automatic open and close by a vent switch at any time.

Manual operation of the windows by a vent switch allows continuous regulation in open or close direction, as well as programmable stroke of the actuator. The VENT 61 controls up to six 230 V actuators in one group and can be enlarged with other VENT 61 to a more group system. The VENT 61 has got a high grade of comfort and hereby supplies a perfect indoor ambient. It is designed to control any kind of 230 V window actuators and considers their technical specifications.



### Thermostat

Constant indoor temperature is guaranteed by using a thermostat without any additional manual operations.



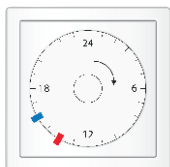
### Vent switch

Vent switches allow the user to operate the windows manually even in case of automatic operations (override).



### Wind-Rain-Detector

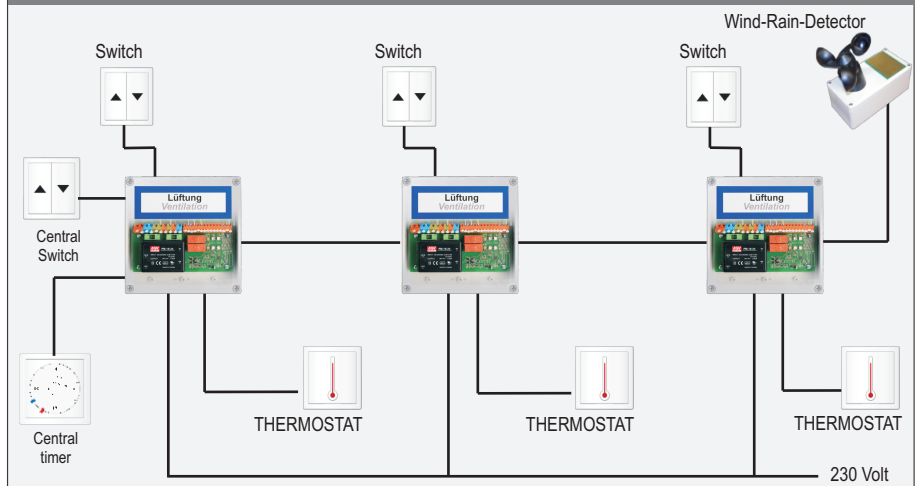
The Wind-Rain-Detector guarantees a safe and quick close of the connected windows in case of rain or strong wind.



### Central Timer

Timer can be controlled by vent times and supply additional functions like night cooling or automatic close at the evening.

### Vent control panel VENT 61 (Parallel operation)



### TECHNICAL DATA

### 230 V Vent control panel type VENT 61

<b>Input voltage</b>	230 V AC / 50 Hz
<b>Max. fuse</b>	16 A / Characteristic C
<b>Output voltage</b>	230 V AC
<b>Output current max.</b>	6 A
<b>Ingress protection</b>	IP 54
<b>Number of groups</b>	1 (extendable up to 6 groups)
<b>Housing (W x H x D)</b>	Plastic, grey 180 x 180 x 60 mm
<b>Weight</b>	approx. 750 g



**SIMON RWA Systeme GmbH** | Medienstraße 8 | D-94036 Passau  
Tel: +49 851 98870-0 | Fax: +49 851 98870-70 | E-Mail: [info@simon-rwa.de](mailto:info@simon-rwa.de) | Internet: [www.simon-rwa.de](http://www.simon-rwa.de)



**SIMON RWA Systeme AG**  
Allmendstrasse 8  
CH - 8320 Fehraltorf  
Tel: +41 44 822 12 52  
Fax: +41 44 822 12 03  
E-Mail: [info@simon-rwa.ch](mailto:info@simon-rwa.ch)  
Internet: [www.simon-rwa.ch](http://www.simon-rwa.ch)



**SIMON RWA Systeme GmbH**  
Aumühlweg 21 / Ared Park TOP 313/414  
A - 2544 Leobersdorf  
Tel: +43 2265 64001  
Fax: +43 2265 64070  
E-Mail: [info@simon-rwa.at](mailto:info@simon-rwa.at)  
Internet: [www.simon-rwa.at](http://www.simon-rwa.at)

