

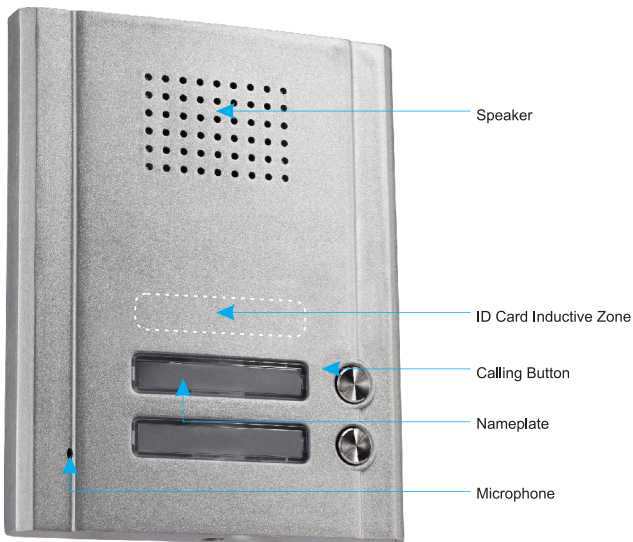
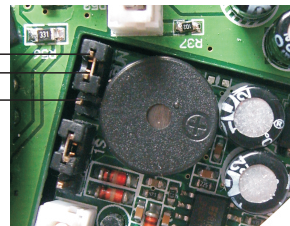
Model: OR-DOM-QH-912

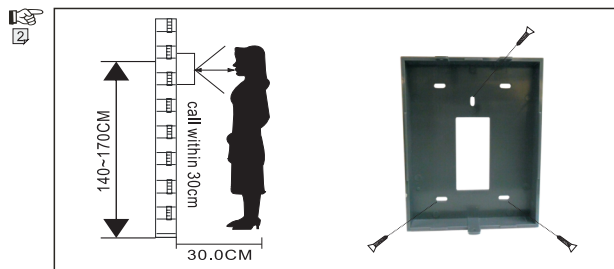
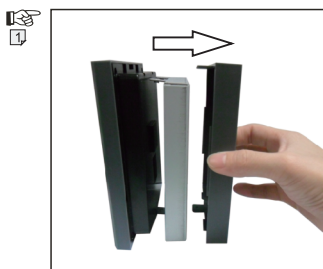


-
1. When pushing the calling button of outdoor unit, indoor unit and extension unit will ring together
 2. The host picks up the indoor phone, then he/she can talk with the visitor
 3. The host can unlock the door by pressing the UNLOCK button on the indoor unit.
 4. The indoor units is connected with outdoor unit by 4 wires cable.
 5. One outdoor unit connects with two indoor units.
 6. The outdoor unit can be connected with lock.
-

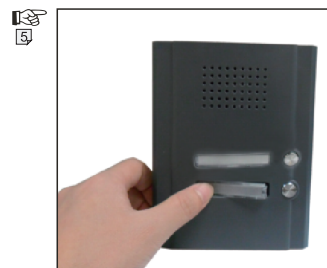
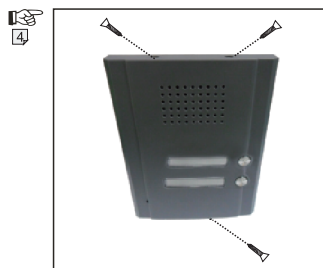
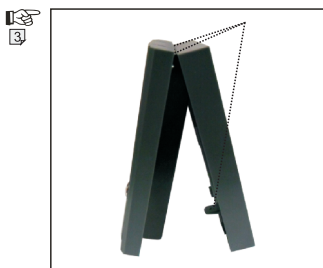
1. Input Voltage, Frequency: AC: 110-120V/60Hz or AC 220-240V/50Hz
2. Working temperature: 0°C~50°C
3. Work Consumption: 1.0W
4. Calling Sound: Telephone Ring
5. Communication Way: Two-way

SET
RUN

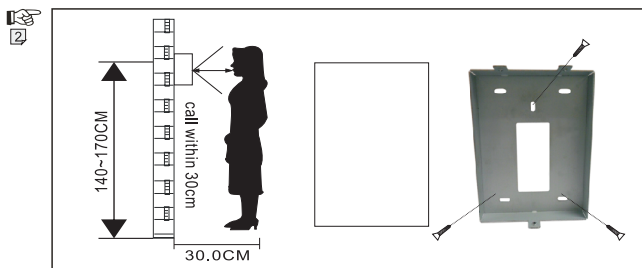
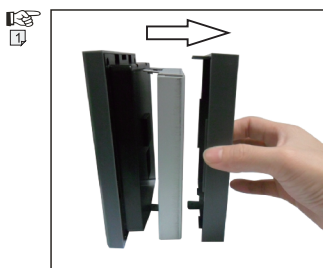




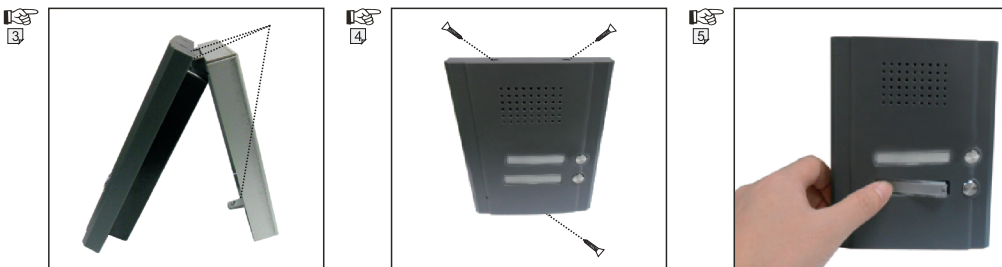
1. Take the product out of the box and take apart the back cover in the way shown in picture1.
2. Fix the back cover by screws (as picture 2) at a height of 1.4m-1.7m (depending on the user's need).



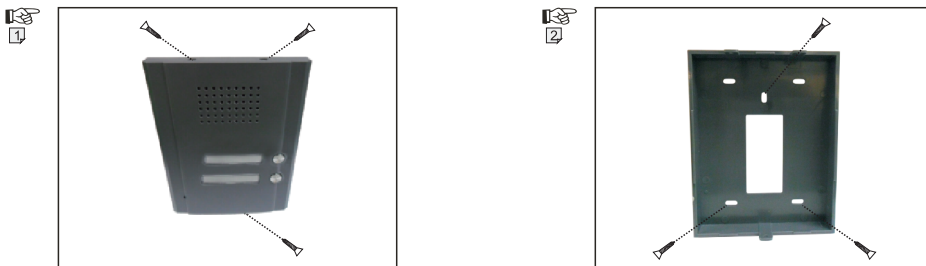
3. Put the main body of the outdoor unit into the back cover (as picture 3). Carefully be noted the three covering buckles should be matched with each other.
4. Fix the outdoor station tightly by screws.(as picture 4)
5. Take out the name plate by pressing the cover lightly, and mark before putting back (as picture 4).



1. Take the product out of the box and take apart the back cover in the way shown in picture1.
2. Drill a hole with dimension 100×130×20 mm at a height of from 1.4 to 1.7m (depending on user's need) on the wall. Then fix the back cover of the outdoor unit with screws (as picture 2).



3. Put the main body of the outdoor unit into the back cover (as picture 3). Carefully be noted the three covering buckles should be matched with each other.
4. Fix the outdoor station tightly by screws.(as picture 4).
5. Take out the name plate by pressing the cover lightly, and mark before putting back (as picture 4).



1. The main body of outdoor unit can be dismantled by loosening the three screws (as picture 1).
 2. Back cover can be dismantled by loosening the three screws (as picture 2).
- If you need to re-install, please refer to the previous installation instruction.

1. There is only 1 user card, 1 adding card, and 1 delete card in default package.

If need more user cards, please do according to the following steps:

Firstly, swipe the adding card at the ID card inductive zone of the outdoor station.

Secondly, swipe a new user card at the same area.

Thirdly, swipe the adding card again at the same area. Then the new user card is added successfully. At most 1000 user cards can be added in the same way.

2. If need to delete any user cards, please do according to the following steps:

Firstly, swipe the delete card at the ID card inductive zone of the outdoor station.

Secondly, swipe the user card you want to delete at the same area.

Thirdly, swipe the delete card again at the same area. Then the user card is deleted successfully.

3. The adding card and delete card are set well already originally. If the user loses the adding card or delete card, he or she can re-program a new setting by referring to right bottom picture on page 1 and doing the following steps:

Firstly, open the back cover of outdoor unit.

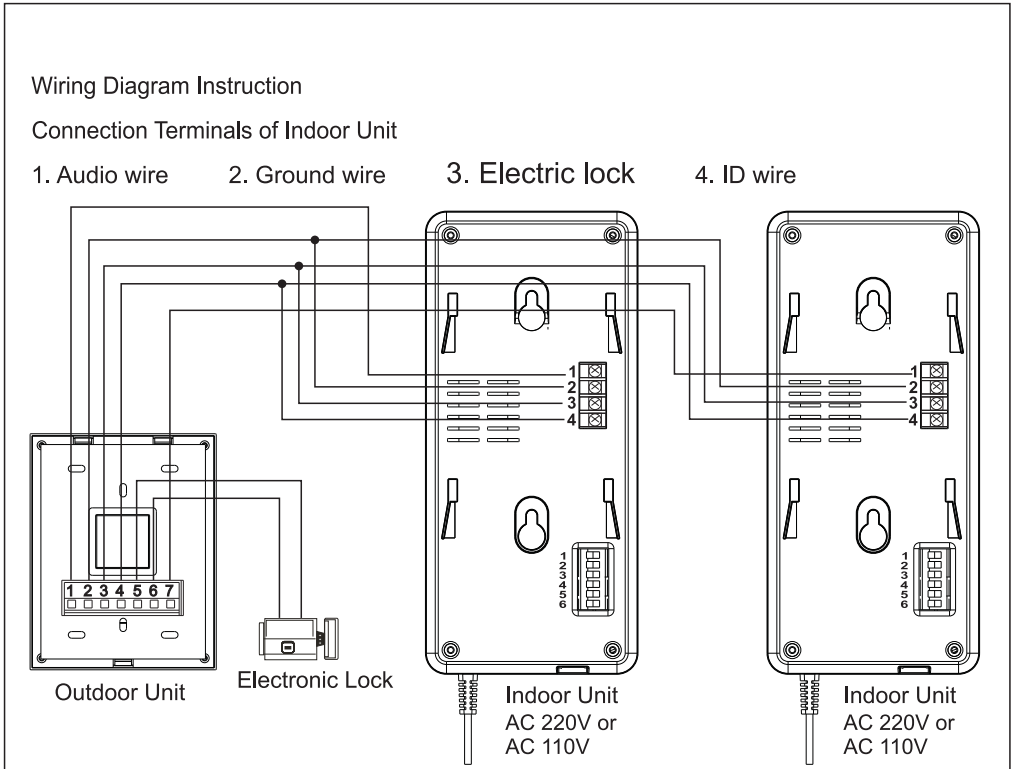
Secondly, please turn off the power, and switch the ID unlock PCB jumper wire to SET.

Thirdly, turn on the power, and swipe two ID cards at the ID card inductive zone of the outdoor unit respectively. If there is a long ring sound after swiping the second ID card, the re-setting is successful.

Fourthly, turn off the power, and switch the jumper wire to RUN. The first ID card will be adding card, and the second will be delete card.

4. The audio door phone kit can unlock the door with ID card, and user can set-up ID function according to individual need.

Note: A cable with specification $4 \times 0.3\text{mm}^2$ is required when install the outdoor unit and indoor unit within a distance from 1 to 15 meters. $4 \times 0.5\text{mm}^2$ required for a distance from 15 to 50 meters, and $4 \times 0.75\text{mm}^2$ for 50 to 100 meters.



The 1,2,3,4 connection terminals of first indoor unit connect with 1,2,3,4 connection terminals of outdoor unit respectively; The 1,2,3,4 connection terminals of second indoor unit connect with 7,2,3,4 connection terminals of outdoor unit respectively. The 5, 6 connection terminals of outdoor unit connect with electric lock.

