

# CONFIGURATION AND ARCHIVE RECEIVE/SEND using the RS7000 Configuration Software

## 1) COM port Initialization

From menu “Communication -> Initialization” you can setup the COM port parameters:

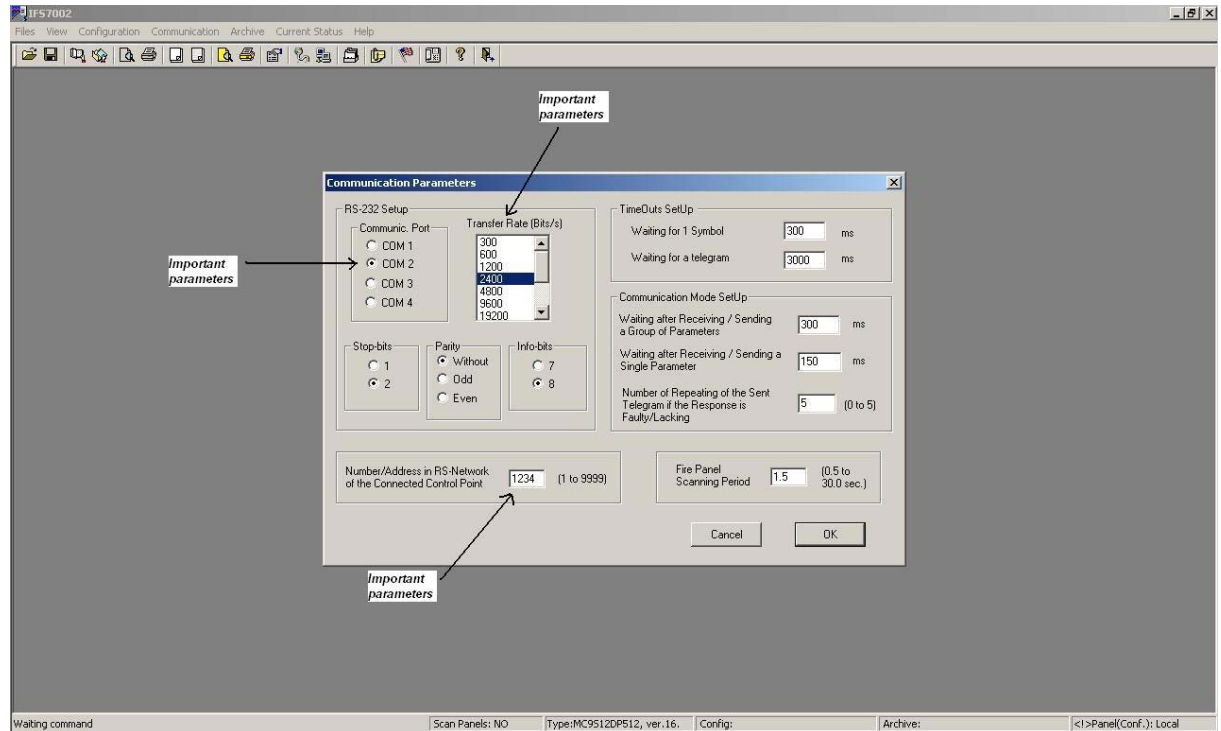


fig.1

The important parameters in this submenu are (fig.1):

**Communic. Port: COM1 – COM4** – corresponding to the communication PORT your PC uses for communication with the IFS7002 panel

**Number/Address in RS-Network** – the address is equal to the address of the panel in the IFS7002's menu “lists -> panel parameters -> Network” (fig.2)

**Transfer Rate (Bits/s)** – the communication speed is equal to the address of the panel in the IFS7002's menu “lists -> panel parameters -> Network” (fig.2)

The other communication parameters must be set by default.

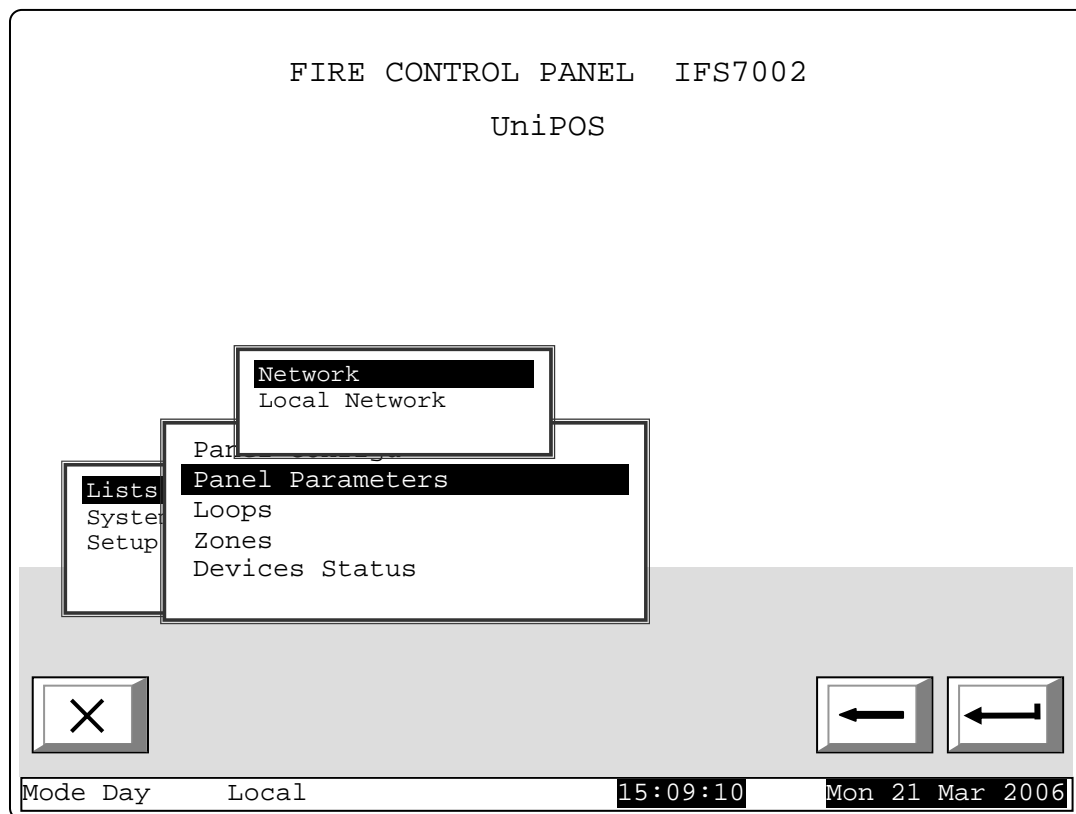


fig.2

The communication with the IFS7002 panel is tested using the command “Fire Panel Testing For Recognizing the Type” from the Software menu “Communication -> Communication with IFS7002” (fig. 3).

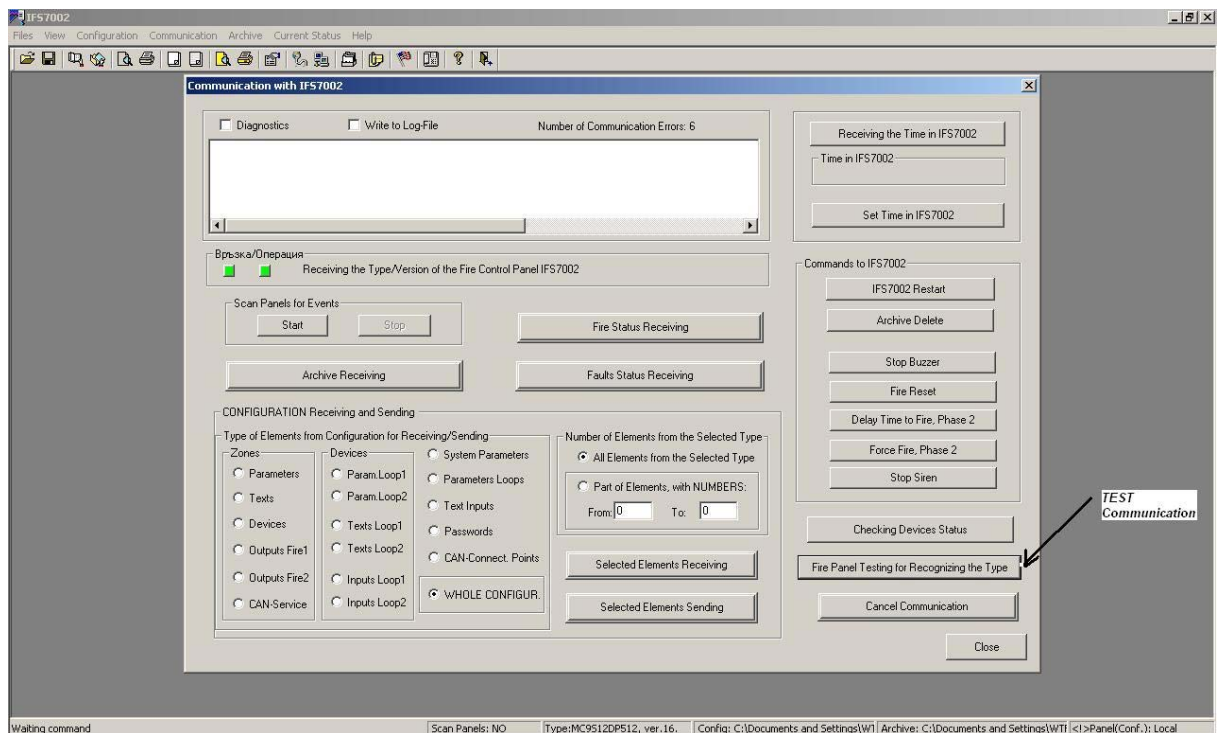


fig.3

## 2) Reading/Browsing the Local Panel Configuration

When we are sure that the communication with the IFS7002 panel is successful you can proceed to the configuration downloading:

2.1) Press the “Select Elements Receiving” button from submenu “Communication -> Communication with IFS7002” (fig.4):

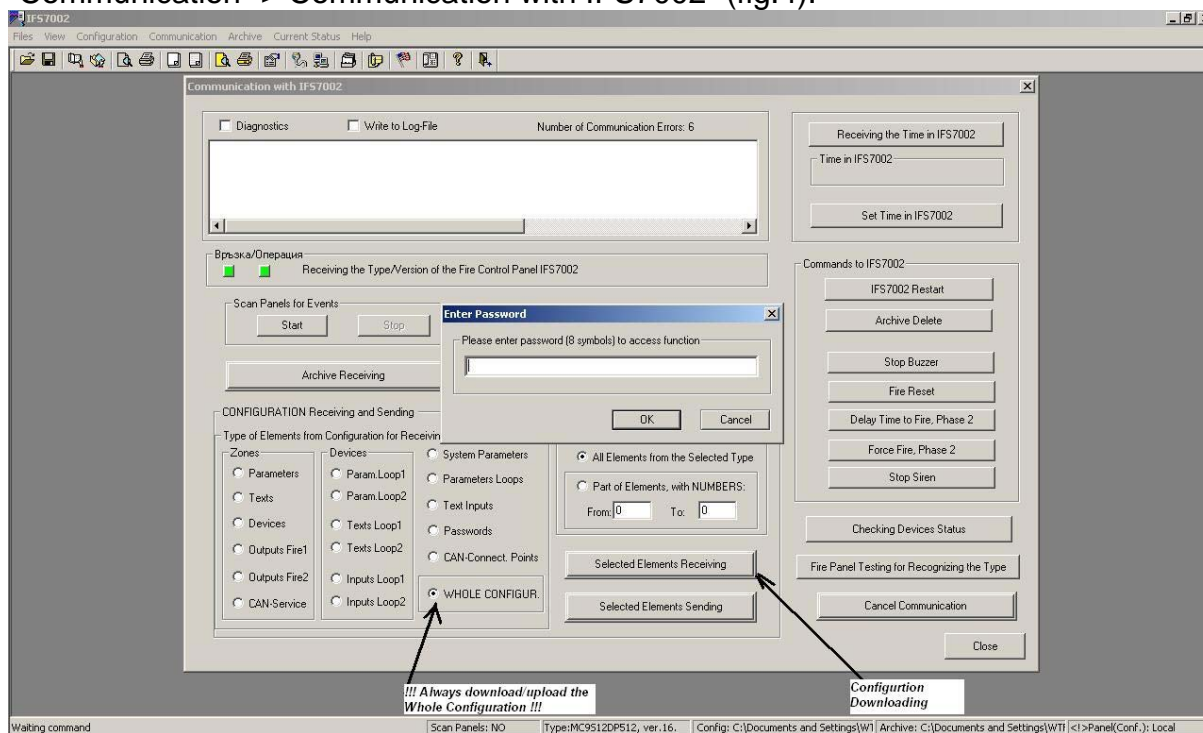
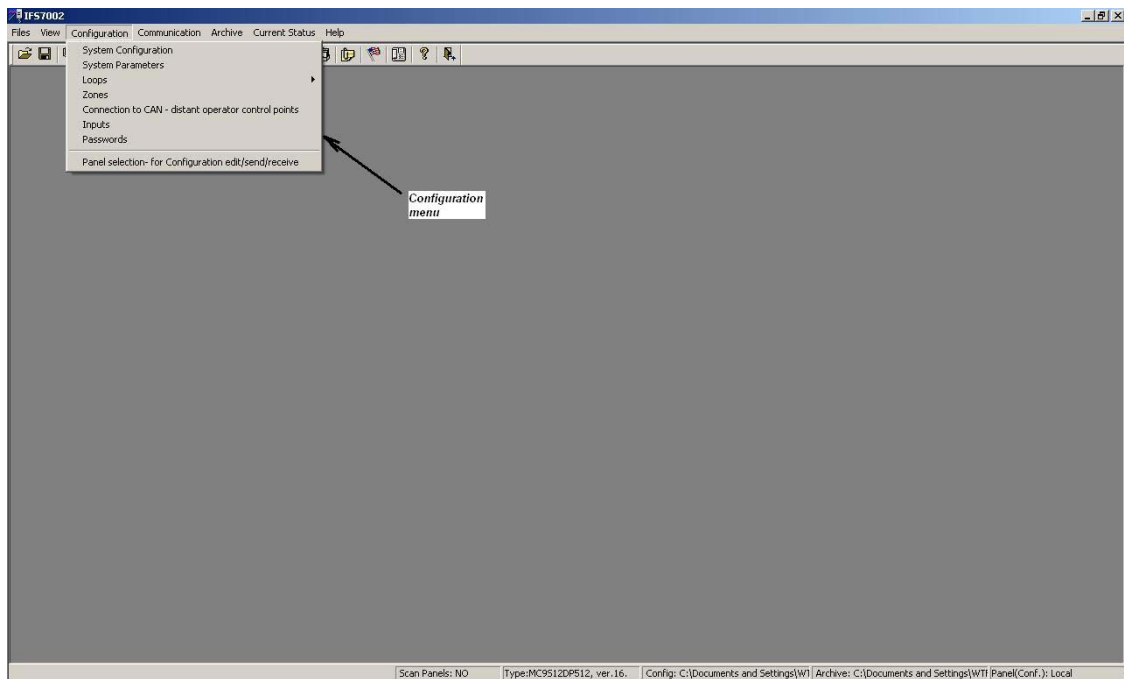


fig.4

**!!! Attention : Always Download or Upload the Whole configuration. (fig.4)**

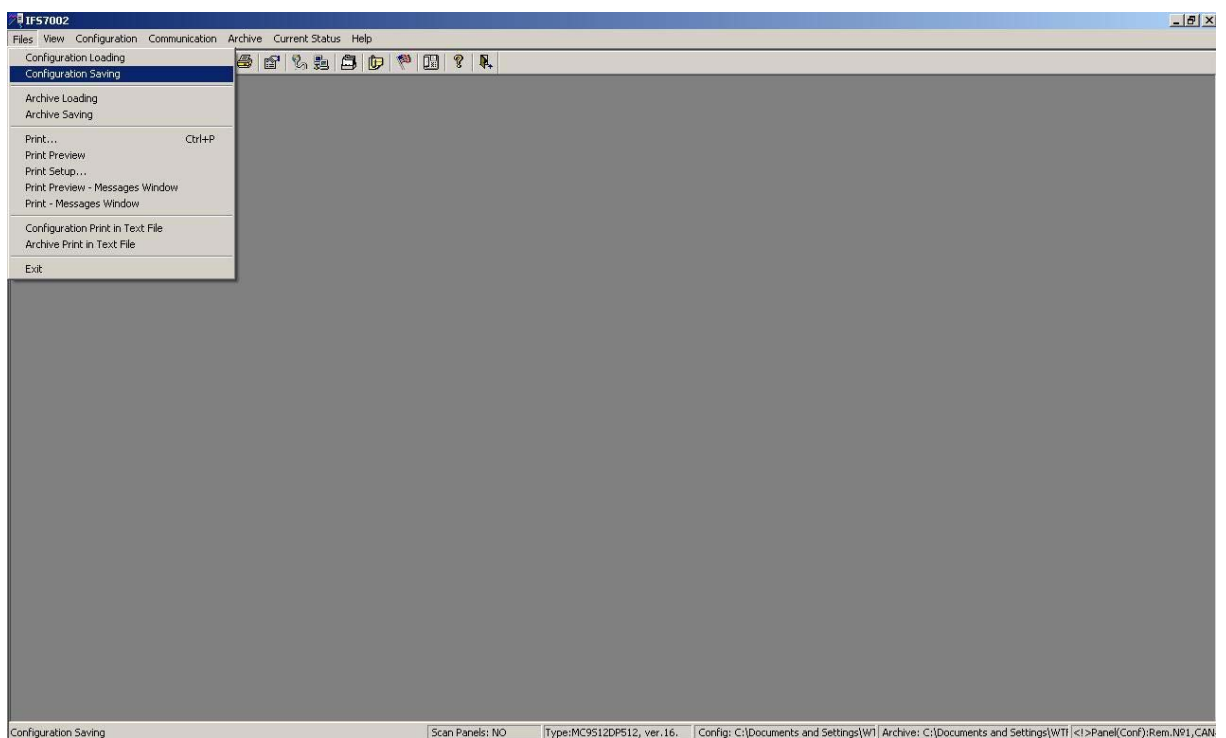
**!!! Attention : The passwords that is required from the software is : uni47pos**

2.2) After you download the configuration you can browse and change it from the “Configuration” menu (fig.5):



**fig.5**

You can backup your configuration in a file from menu “Files -> Configuration Saving” (fig.6):



**fig.6**

Using this menu you create a .cfg file in a user preferred place.

2.3) You can upload your configuration in the panel from menu “Communication -> Communication with IFS7002 -> Selected Elements Sending ” (fig.7).

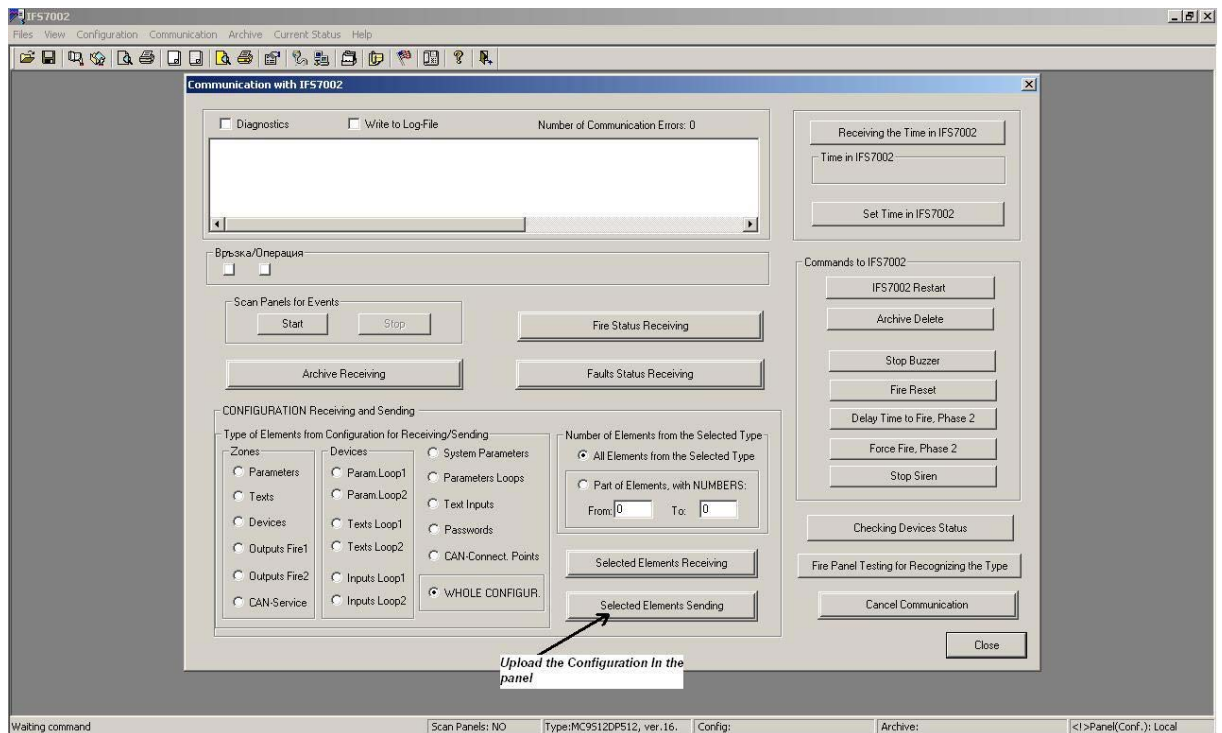


fig.7

### 3) Reading/Browsing the Remote Panel Configuration

3.1) Only after you have downloaded the Local Panel Configuration you can download and browse the remote panel configuration. The steps are:

- choose the submenu "Configuration -> Select Loc./Remote" (fig.8)

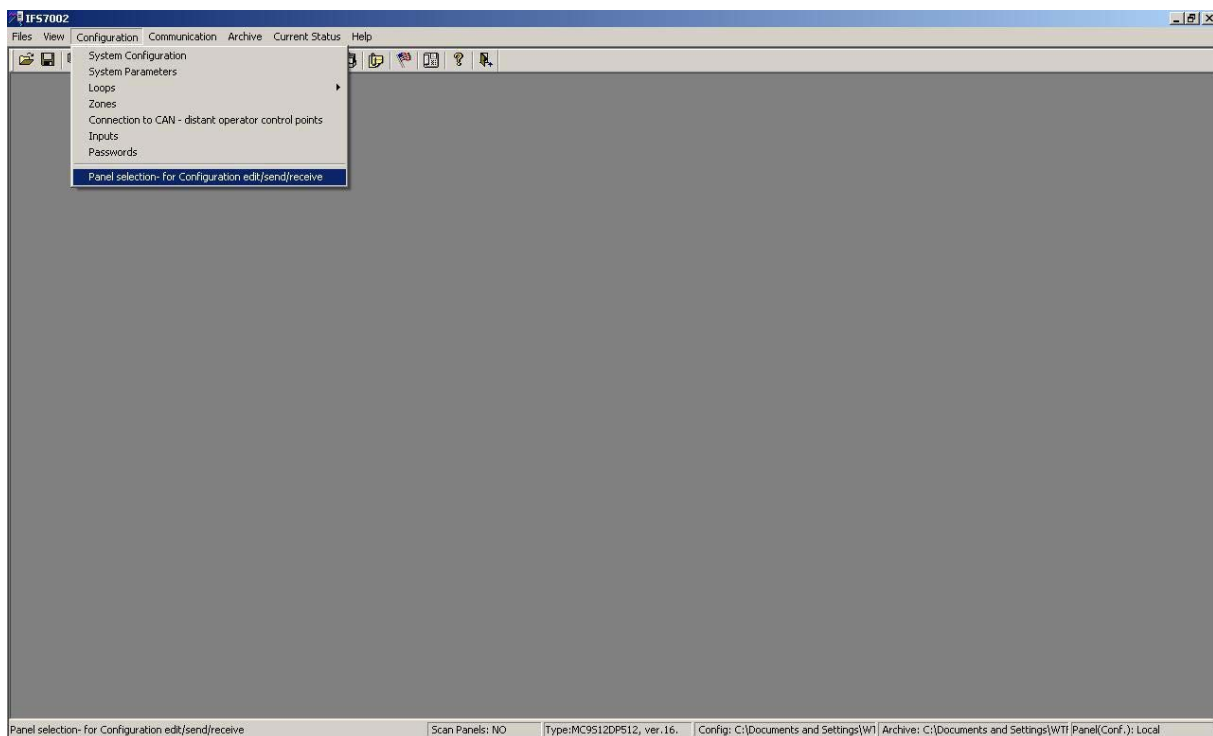


fig.8

- Choose from the list the remote panel you want to communicate with (fig.9):

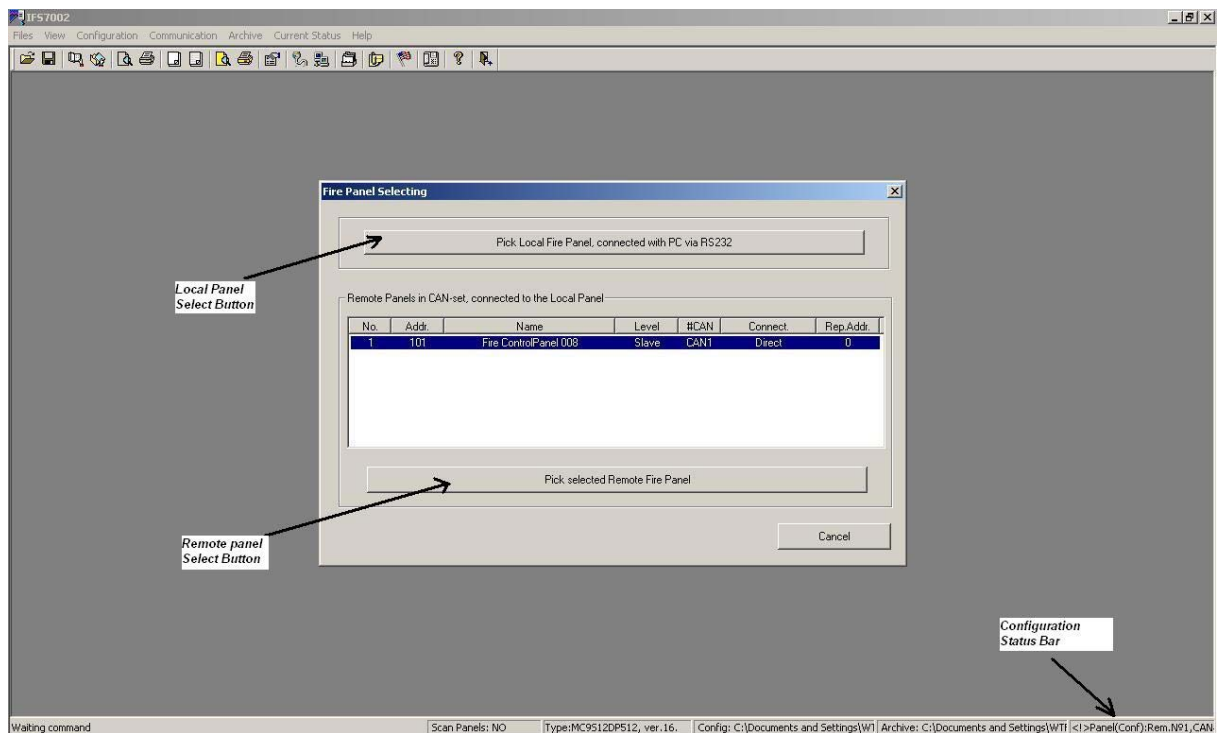


fig.9

After you choose the remote panel then the tab menu status will change to the remote panel number (Configuration Status bar - bottom right corner of the picture, fig.9).

3.2) After you choose the remote panel in 3.1) then you can:

- Download the remote panel configuration from menu "Communication -> Communication with IFS7002" (fig.4).
- Backup your remote panel configuration in a file from menu "Files -> Configuration Saving" (fig.6).
- Browse and change it from the "Configuration" menu(fig.5).
- Upload the configuration in the Remote Panel(fig.7).

4) Archive reading and review of the Local and Remote panel

You can receive an Archive from menu:

"Communication -> Communication with IFS7002 -> Archive Receiving".

4.1) When you press the "Archive Receiving" button the Software will ask you which panel's Archive you want to download (fig.10).

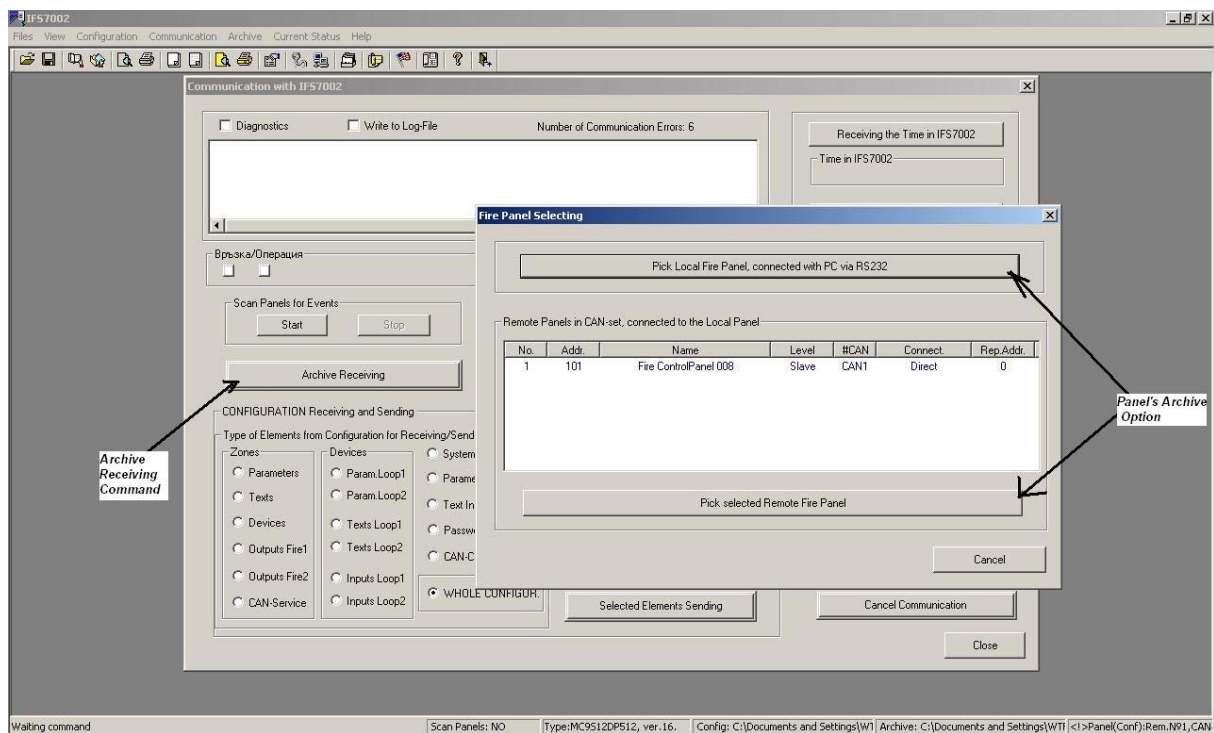


fig.10

4.2) When you finish downloading the Archives you need you can review the content of the Archives from menu "Archive -> Current Archive Review" (fig.11):

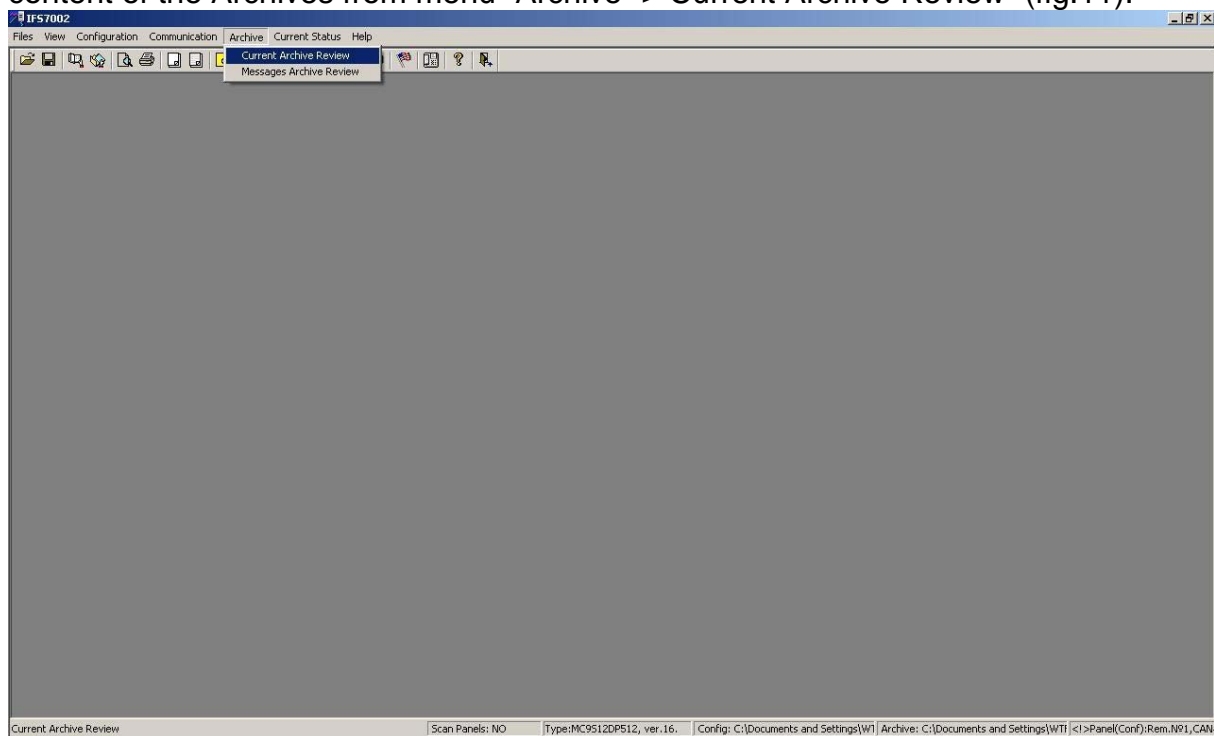


fig.11