

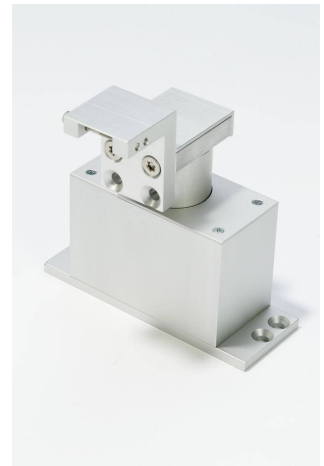
Supplementary Electric locking Helimatic

An innovation that enthusiasts!

The locking mechanism for inwards opening windows and doors.

Helimatic works with existing window bolt system to provide secure locking for automatic windows. The helimatic lock is installed in tandem with a chain actuator of our make and automatically engages and disengages the window bolt system as the actuator opens and closes the window. Helimatic is purely mechanical and requires no power supplies or batteries to operate. Ideal for applications where security is paramount for example schools, hospitals, offices and houses.

Actuators to be ordered separately!



Technical Data:

Supplementary electric locking type Helimatic Item number:	
Version:	Capped locking mechanism mounted on a basic plate
Window locking force stabilized by elastic force:	160 N
Temperature resistance:	300° C for 30 minutes according to DIN EN 12101/2
Dimensions:	Aluminium, EV1 anodized 138 x 50 x 116 mm (without brackets)
Connection to window:	Square 7 x 7 mm
Weight:	Approx. 1.0 kg

Article

Helimatic for DIN - right - wings, locking bolt locks rotating rightwards		
	Typ	Item number
	HELMATIC-RE	B5 6090
	<p>Attributes: For application at on-site locking fittings of inside opening windows. The mechanism directly affects the square of a circular locking strip of a window wing. The linear close motion of an actuator is converted into a 90° clockwise rotating that locks or unlocks the window.</p> <p>Tandem application together with a chain actuator type EA-K 24(230)/400/600 or type EA-KS 24(230)/300/500 and all necessary mounting brackets. Actuator and</p>	

brackets to be ordered separately!

Helimatic for DIN - left - wings, locking bolt locks rotating leftwards

Typ	Item number
HELMATIC-LI	B5 6091
<p>Attributes: For application at on-site locking fittings of inside opening windows. The mechanism directly affects the square of a circular locking strip of a window wing. The linear close motion of an actuator is converted into a 90° clockwise rotating that locks or unlocks the window.</p> <p>Tandem application together with a chain actuator type EA-K 24(230)/400/600 or type EA-KS 24(230)/300/500 and all necessary mounting brackets. Actuator and brackets to be ordered separately!</p>	